

STAINLESS STEEL METER INSTALLATION GUIDE

V3040	WS15 METER ASY NPT MXF 28IN	V3040-15	WS15 METER ASY NPT MXF 15FT
V3040BSPT	WS15 METER ASY BSPT MXF 28IN	V3040BSPT-15	WS15 METER ASY BSPT MXF 15FT
V3094	WS2 METER ASY NPT MXF 28IN	V3094-15	WS2 METER ASY NPT MXF 15FT
V3094BSPT	WS2 METER ASY BSPT MXF 28IN	V3094BSPT-15	WS2 METER ASY BSPT MXF 15FT
V3095	WS3 METER ASY NPT MXF 48IN	V3095-15	WS3 METER ASY NPT MXF 15FT
V3095BSPT	WS3 METER ASY BSPT MXF 48IN	V3095BSPT-15	WS3 METER ASY BSPT MXF 15FT

WARNING: USE ONLY SILICONE-BASED LUBRICANTS ON ALL CLACK CORPORATION COMPONENTS

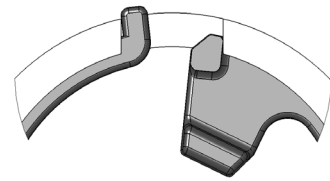
HYDROCARBONS WILL DAMAGE COMPONENTS THAT CONTAIN O-RINGS AND OR PLASTIC. THIS CAN CAUSE LEAKS OR BREAKAGE. DO NOT USE LUBRICANTS THAT CONTAIN HYDROCARBONS SUCH AS VASELINE® /PETROLEUM JELLY, WD-40®, ETC. DO NOT USE CLACK CONTROL VALVE PRODUCTS ON WATER SUPPLIES THAT CONTAIN HYDROCARBONS, SUCH AS BENZENE, GASOLINE, KEROSENE, ETC.

Measurement	Imperial	Metric
Meter Pulses		
1.5 Inline	37 Pulses/Gallon	9.8 Pulses/Liter
2.0 Inline	20 Pulses/Gallon	5.3 Pulses/Liter
3.0 Inline	8 Pulses/Gallon	2.1 Pulses/Liter
Meter Accuracy		
1.5 Inline	0.50 - 75 gpm ± 5%	2.00 - 284 lpm ± 5%
2.0 Inline	1.50 - 150 gpm ± 5%	5.70 - 568 lpm ± 5%
3.0 Inline	3.50 - 350 lpm ± 5%	13.00 - 1325 lpm ± 5%
NOTE: Not all flow monitors will register accurately at the specified specs above. Contact your monitor manufacturer for limitations.		
Pressure Drop		
1.5 Inline	2.7 PSID @ 75 gpm	0.19 bar ΔP @ 284 lpm
2.0 Inline	3.6 PSID @ 150 gpm	0.25 bar ΔP @ 568 lpm
3.0 Inline	7.3 PSID @ 350 gpm	0.50 bar ΔP @ 1325 lpm
Operating Pressure		
20 - 125 PSI		
1.4 - 8.6 bar		
Operating Temperature		
40° - 110°F		
4° - 43°C		
Meter Wiring		
<p>Wire Gauge: 22 Red: Positive Black: Negative White: Signal (Meter Output) Voltage Requirement: 4 - 24 VDC Output Signal: 0.4 Hz - 47.5 Hz Terminals: Molex 41572 or 40445 Housing: Molex 22-01-3037 (Series 2695 White Housing)</p> <p>NOTE: When connecting to other manufacturer's control valves, contact your O.E.M. for proper wiring instructions.</p>		
<p>CAUTION: THIS WATER METER SHOULD NOT BE USED AS THE PRIMARY MONITORING DEVICE FOR CRITICAL OR HEALTH EFFECT APPLICATIONS. THE ARROW ON THE METER BODY SHOULD POINT THE SAME DIRECTION AS THE OUTLET WATER FLOW. THE METER CAN BE INSTALLED IN HORIZONTAL OR VERTICAL UPWARD WATER FLOW APPLICATIONS.</p>		

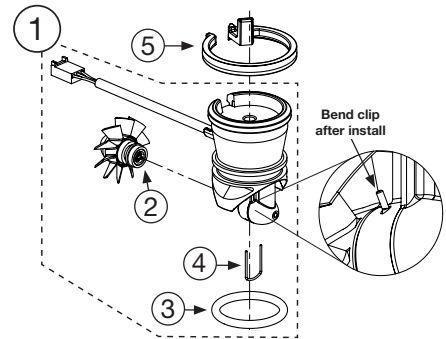
COMPOSITE METER INSTALLATION GUIDE

1.5" METER • V3040, V3040-15, V3040BSPT, V3040BSPT-15

Drawing No.	Order No.	Description	Qty.
1	V3003-02	WS1.5/2L/2H METER COMMERCIAL ASY	1
	V3221	WS REMOTE METER ASY 15 FT CORD	
2	V3008-03	WS15/2 TURBINE ASY	1
3	V3105	O-RING 215	1
4	V3501	WS15/2 TURBINE CLIP	1
5	V3632	WS15/2/3 METER RETAINING CLIP	1
6	V3401-04	WS1.5 METER HOUSING NPT	1
	V3401BSPT-04	WS1.5 METER HOUSING BSPT	
Not Shown	V4357	WS1.5 FLOW STRAIGHTENER	1

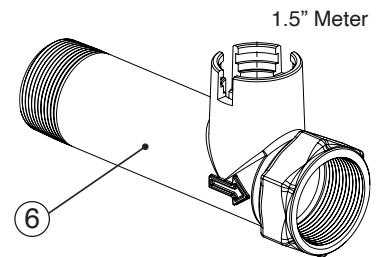


Typical meter retaining clip installation. Ensure clip is fully engaged in groove and tabs positioned in slot as shown.

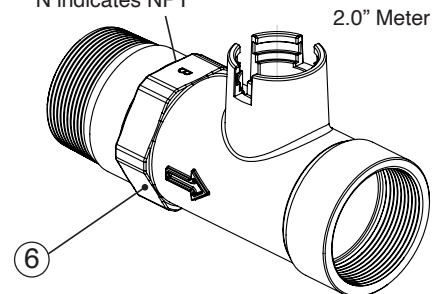


2.0" METER • V3094, V3094-15, V3094BSPT, V3094BSPT-15

Drawing No.	Order No.	Description	Qty.
1	V3003-02	WS1.5/2L/2H METER COMMERCIAL ASY	1
	V3221	WS REMOTE METER ASY 15 FT CORD	
2	V3008-03	WS15/2 TURBINE ASY	1
3	V3105	O-RING 215	1
4	V3501	WS15/2 TURBINE CLIP	1
5	V3632	WS15/2/3 METER RETAINING CLIP	1
6	V3754-01	WS2 METER HOUSING NPT MxF	1
	V3754BSPT-01	WS2 METER HOUSING BSPT MxF	
Not Shown	V3488	WS2 FLOW STRAIGHTENER	1



B indicates BSPT
N indicates NPT



B indicates BSPT
N indicates NPT

